

50 STATIONS
36 MILES

The Northern Line Briefing

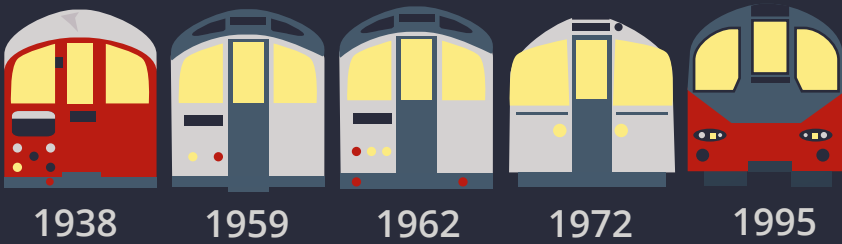
Longest continuous tunnel **17.3** miles

Morden



East Finchley

Rolling Stock Timeline



1938

1959

1962

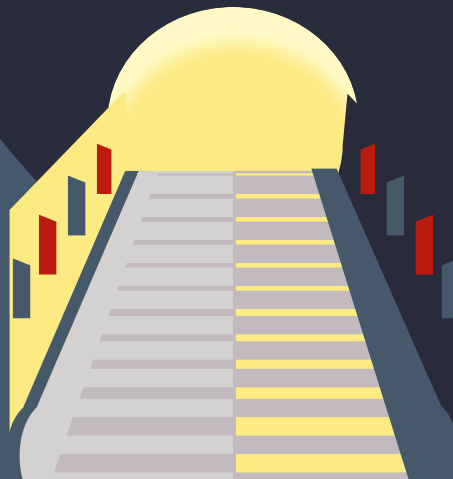
1972

1995

WW2
STOCKWELL & CLAPHAM SOUTH

2
OF
7
DEEP LEVEL SHELTERS BUILT ON THE NORTHERN LINE

DEEPEST
STATION
HAMPSTEAD
58.5
METRES



ANGEL **HAMPSTEAD**

197 ft
LONGEST
ESCALATOR

MOST
STEPS
320



Last island
stations remaining

Sources:

Wikipedia.org, Squarewheels.org.uk, Jolyon Attwool Telegraph.co.uk (article first published 2014).

NORTHERN LINE